

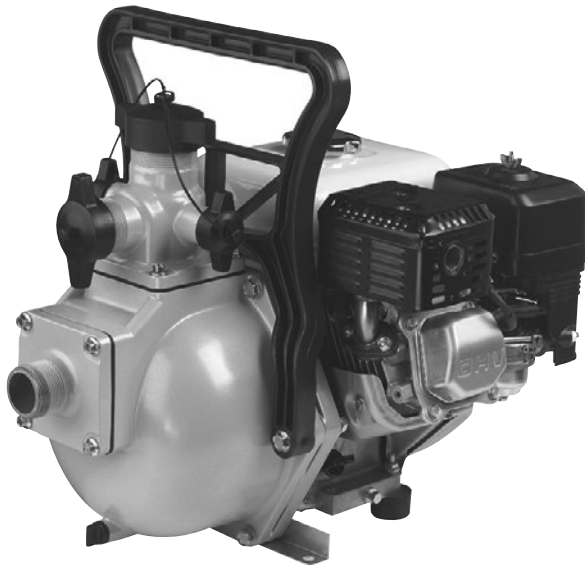


# ONGA<sup>®</sup>

## BLAZEMASTER

### B & BM Series

Engine Drive Pumps for  
Fire Fighting & Water Transfer



Should the installer or owner be unfamiliar with the correct installation or operation of this type of equipment, contact the distributor or manufacturer for correct advice before proceeding with installation or operation of the product

## **Relax - you've bought an Onga ...**

***Congratulations on your decision to purchase an Onga product. Onga is one of the best known companies in its field, with a proud local and international reputation.***

*In fact, wherever people need to move water from one point to another - whether in leisure industry, horticulture, agriculture or in and around the home - Onga is a byword for reliability, value for money and technological innovation. So why does Onga lead its field? Here are a few simple reasons ...*

### **1. Continual Product Improvement**

Onga employ the best engineers both in Australia and around the world to develop new and better ways to pump and handle water.

### **2. Dedication to Quality**

There is only one standard that we at Onga set ourselves for both product quality and the quality of our service. That standard is excellence ... to have no-one better than us at what we do ... nothing short of that is acceptable.

### **3. A Fair Price**

Onga products are neither the cheapest nor the most expensive in their field. Our products do, on the other hand, always represent very good value for money - they always have and they always will.









### **4. Our Team of Dealers**

We believe Onga's hand picked authorised dealer network throughout Australia and worldwide are second to none. We invest a huge sum training them and supporting them. They are your link to us, and we value their expertise and trust.

# Table of Contents

1	Warnings	Page 3
2	Models and technical information	Page 4
3	Application	Page 5
4	Installation	
	<input type="checkbox"/> Preparation for operation	
	<input type="checkbox"/> Pump Protection	
	<input type="checkbox"/> Suction	
	<input type="checkbox"/> Discharge	
5	Operation	Page 6
6	Service & Maintenance	Page 7
7	Exploded diagram- Internal parts	Page 8

## 1. Warnings:

	These instructions are a guide only. Users not familiar with pumping equipment should seek advice from people with experience in pump equipment and installation
	The pump operator must be provided with this owner's manual and the engine manufacturer's owner's manual. These must be read before operation and followed during operation.
	No oil is supplied with the engine. Oil must be added in accordance with the engine manufacturer's instructions
	Do not run the pump without liquid in the casing. Always fill the pump casing with liquid and prime the pump before use (see page 5). Do not allow the pump to continue running once the water supply is empty or has been shut off.
	Do not use the pump in an enclosed area – engine exhaust will build up and cause asphyxiation
	Do not operate the pump in an explosive environment or near combustible matter.
	Ensure the pump is on a stable footing before operating. Please refer to the engine manufacturer's owner's manual.
	After use, the engine will be very hot. Do not touch the engine. During use the engine will become very hot. Make sure that you do not touch the engine before it has completely cooled down.

# 2. Models and Technical Information

Pump Model	Hp Nominal	Engine Model	Suction (BSP) Male	3 Way Discharge (BSP) Male	Drain Plug (BSP) Male	Shaft Thread	Volume Fuel Tank	Fuel Type
B55H	5.5	Honda GX160	1.5"	1",1",1.5"	1/4	5/8" UNF	2.5 Litres	Petrol
B65H	6.5	Honda GX200	2"	1",1",2"	1/4	5/8" UNF	3.6 Litres	Petrol
B65HE	6.5	Honda GX200 (Electric Start)	2"	1",1",2"	1/4	5/8" UNF	3.6 Litres	Petrol
B90H	9.0	Honda GX270	2"	1",1",2"	1/4	1" UNF	6.0 Litres	Petrol
B90HE	9.0	Honda GX270 (Electric Start)	2"	1",1",2"	1/4	1" UNF	6.0 Litres	Petrol
B55BS	5.0	Briggs & Stratton 5.0HP	1.5"	1",1",1.5"	1/4	5/8" UNF	3.8 Litres	Petrol
B65BS	6.0	Briggs & Stratton 6.0HP	2"	1",1",2"	1/4	5/8" UNF	3.8 Litres	Petrol
B65BSE	6.0	Briggs & Stratton 6.0HP (Electric Start)	2"	1",1",2"	1/4	5/8" UNF	3.8 Litres	Petrol
B80BS	8.0	Briggs & Stratton 8.0HP	2"	1",1",2"	1/4	1" UNF	3.8 Litres	Petrol
B80BSE	8.0	Briggs & Stratton 8.0HP (Electric Start)	2"	1",1",2"	1/4	1" UNF	3.8 Litres	Petrol
B10BSE	10.0	Briggs & Stratton 10.0HP (Electric Start)	2"	1",1",2"	1/4	1" UNF	3.8 Litres	Petrol
B48Y	4.8	Yanmar L48E	1.5"	1",1",1.5"	1/4	3/4" UNF	2.5 Litres	Diesel
B48YE	4.8	Yanmar L48E (Electric Start)	1.5"	1",1",1.5"	1/4	3/4" UNF	2.5 Litres	Diesel
B70Y	7.0	Yanmar L70AE	2"	1",1",2"	1/4	1" UNF	3.5 Litres	Diesel
B70YE	7.0	Yanmar L70AE (Electric Start)	2"	1",1",2"	1/4	1" UNF	3.5 Litres	Diesel
B10YE	10.0	Yanmar L100AE (Electric Start)	2"	1",1",2"	1/4	1" UNF	5.5 Litres	Diesel
BM55H	5.5	Honda GX160	1.5"	1",1",1.5"	1/4	5/8" UNF	2.5 Litres	Petrol
BM65H	6.5	Honda GX200	2"	1",1",2"	1/4	5/8" UNF	3.6 Litres	Petrol
BM65HE	6.5	Honda GX200 (Electric Start)	2"	1",1",2"	1/4	5/8" UNF	3.6 Litres	Petrol
BM90H	9.0	Honda GX270	2"	1",1",2"	1/4	1" UNF	6.0 Litres	Petrol
BM90HE	9.0	Honda GX270 (Electric Start)	2"	1",1",2"	1/4	1" UNF	6.0 Litres	Petrol
BM55BS	5.0	Briggs & Stratton 5.0HP	1.5"	1",1",1.5"	1/4	5/8" UNF	3.8 Litres	Petrol
BM65BS	6.0	Briggs & Stratton 6.0HP	2"	1",1",2"	1/4	5/8" UNF	3.8 Litres	Petrol
BM65BSE	6.0	Briggs & Stratton 6.0HP (Electric Start)	2"	1",1",2"	1/4	5/8" UNF	3.8 Litres	Petrol
BM80BS	8.0	Briggs & Stratton 8.0HP	2"	1",1",2"	1/4	1" UNF	3.8 Litres	Petrol
BM80BSE	8.0	Briggs & Stratton 8.0HP (Electric Start)	2"	1",1",2"	1/4	1" UNF	3.8 Litres	Petrol
BM10BSE	10.0	Briggs & Stratton 10.0HP (Electric Start)	2"	1",1",2"	1/4	1" UNF	3.8 Litres	Petrol
BM70Y	7.0	Yanmar L70AE	2"	1",1",2"	1/4	1" UNF	3.5 Litres	Diesel
BM70YE	7.0	Yanmar L70AE (Electric Start)	2"	1",1",2"	1/4	1" UNF	3.5 Litres	Diesel
BM10YE	10.0	Yanmar L100AE (Electric Start)	2"	1",1",2"	1/4	1" UNF	5.5 Litres	Diesel

## TECHNICAL DATA

Priming Port:	2" BSP
Max Working Pressure	1300 kpa
Water temp range	5°C – 40°C
Max amb temperature	40°C as per engine manufacturer's data

## OPTIONAL ACCESSORIES

- Rollover Frames      Part Number 801372K [up to 9HP Petrol]  
    Part Number 801373K [9HP +, and diesel]
- Ball Valves
  - 1" BSP                      Part Number 703033
  - 1 1/2" BSP                Part Number 703031
  - 2" BSP                      Part Number 703030
- Fire Fighting Kits      Part Number 701124 & 701126 comprising
  - 1 X 6 metre grey PVC Suction Hose 38mm I.D. (701124 kit)
  - 1 x 6 metre grey PVC Suction Hose 50mm I.D. (701126 kit),
  - 2 X 10 metre Yellow PVC Delivery Hose 20mm I.D.,
  - 2 X Adjustable Fire Nozzles,
  - Nuts & Tails
  - Suction Strainer PVC
  - Stainless Steel Hose Clamps.

### 3. APPLICATION

If the pump is to be used for pumping liquids other than water, ask your pump supplier for advice as to which model is best suited to your needs. Special models with viton elastomers are available for pumping aggressive liquids

### 4. INSTALLATION

#### a) Preparation for operation

Read these instructions first.

Inspect your pump for shipping damage. Report any damage to your Onga dealer.

Fill the engine crankcase with oil, as per the engine manufacturer's owner's manual.

Fill the fuel tank with **unleaded petrol** (petrol engine models) or **diesel** (diesel engine models), as per the engine owner's manual.

Make sure the suction piping is free of air leaks and is laid so that there can be no air locks (see C) Suction)

Fit a strainer to the suction line

#### b) Pump Protection

Warranty of these pumps is void unless they are operated in accordance with this owner's manual and the enclosed engine manufacturer's owner's manual.

The pumps should be protected from the weather, floods, chemicals, dust, vermin, insects etc. If the pump has a fixed location; it should be housed in a weather proof, well-vented enclosure so that engine heat and exhaust can escape. When bolted down flexible mounts should be used. Depending on application they do not have to be bolted down.

#### c) Suction

To maintain optimum performance from your pump, the suction pipe should be:

- Kept to the shortest length possible – place the pump as close to the water as possible.**
- Reinforced crush resistant (non-collapsible) hose or pipe.
- All fittings should be air tight
- Flexible pipes should rise gently from the water source to the suction/ inlet port without excessive dips and sharp angles, to avoid air locks.
- Pipes should be equal to or larger than the diameter of the suction/ inlet port.
- Suction strainers should be fitted to prevent foreign matter entering the pump.
- Where practicable, the installation and use of a suction float will aid in the performance of your pump, by keeping suction away from the debris on the bottom of the dam or river.
- Ensure that the suction is completely submersed.**

## 4. INSTALLATION (continued)

### d) Discharge

The length and diameter of the discharge hoses will affect the pressure and flow rate at which your pump operates. Care should be taken when selecting discharge pipe/hoses and fittings. Pressure ratings of all components must exceed the maximum pressure of the pump by an appropriate safety factor. We recommend the use of the Onga's own hose kit

- Suitable for either flexible or rigid piping.
  - Models include 1" BSP or NPT side outlets.
  - Models include 1 ½" or 2" BSP or NPT front outlets.
- All have 2" priming inlets

## 5. OPERATION



**Ensure that your pump is filled with water before operating.**

Connect suction piping, and ensure that the suction is completely submerged. Remove the priming plug and fill the pump with water. Your pump is equipped with a suction flap valve and is capable of drawing air out of normal size suction pipes or hoses.

Replace the priming plug – screw it down tightly to seal.

***Follow Engine Manufacturer's Instructions for starting the engine.***

If only a small amount of water is pumped, and then flow stops, switch off the engine and check the suction pipe/hose assembly for possible air leaks. Repair leaks before starting priming procedure again.

Blazemaster single stage pumps, when filled with water, will gradually draw air out of the suction line to a maximum prime depth of 6m. The Blazemaster Twin models will prime to a maximum depth of 3.5m. If priming a long or larger diameter pipe, additional water may have to be added to the pump at 3-minute intervals. Switch off the engine each time.



**Do not remove any caps while the pump is operating.**

## 6. Service & Maintenance



Pumping water containing solids will reduce the life of the pump, and may affect warranty



Pumping chemicals or agricultural products may affect the warranty. Please ask your Onga dealer about viton seals.



Do not pump hydrocarbons with this pump



The pump should be drained after use and flushed out with clean, fresh water. Flushing will extend the pump's life.



Store your pump in a dry location



Service the engine as recommended in the engine manufacturer's owner's manual



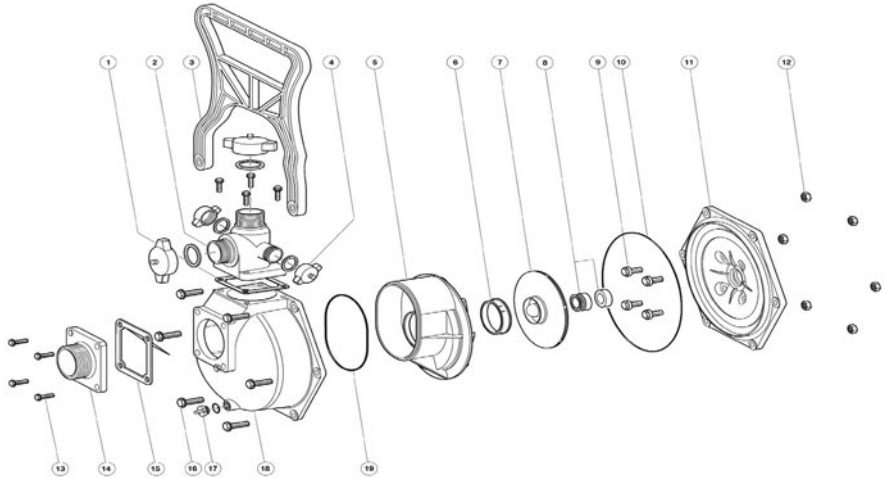
Drain the fuel if the pump will not be used for some time (more than two months). The engine will be difficult or impossible to start if the fuel is stale.



Do not refuel the engine while the pump is operating.

Always use original service parts as supplied and recommended by Onga and the engine manufacturer. Failure to do so may void warranty.

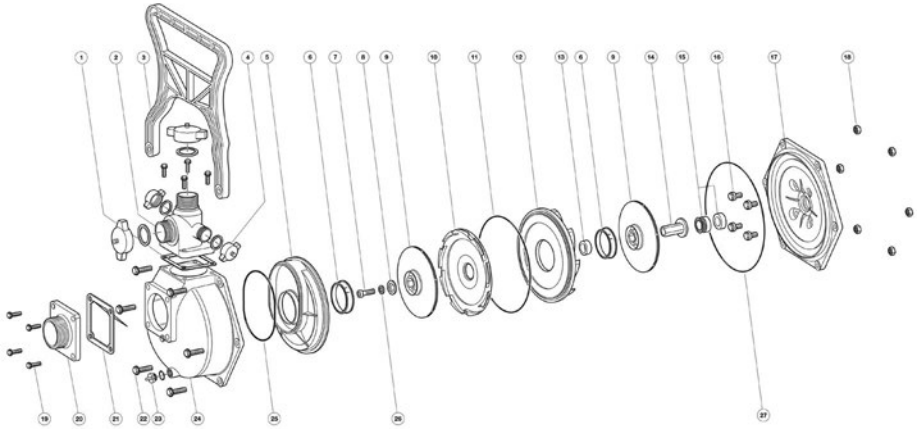
# 7. Exploded diagram- Internal parts BLAZEMASTER



Item	Description	Qty	Item	Description	Qty
1	Gasket - Discharge	1	10	O'ring - Casing	1
2	Flange - Discharge 1½" BSP	1	11	Yoke ¾" Blazemaster	1
	Flange - Discharge 2" BSP	1		Yoke 1" Blazemaster	1
3	Handle	1	12	Nuts - Casing (Set/12)	6
4	Cap & Washer 2" BSP	As Required		Nut - Bush 3/8" (Handle)	2
	Cap & Washer 1.5" BSP	As Required	13	Screw (Set/8) M8	8
	Cap & Washer 1" BSP	2	14	Flange - Suction 1 1/2" BSP	1
5	Diffuser	1		Flange - Suction 2" BSP	1
6	Wear Ring	1	15	Gasket - Clacker Assy	1
7	Impeller - ¾" Shaft	1	16	Bolts Casing	6 (4 if handle)
	Impeller - 5/8" Shaft	1		Bolts Casing	2
	Impeller - 1" Shaft	1	17	Plug ¼" Drain (Including Oring)	1
8	Seal - Mechanical ¾"	1	18	Casing	1
	Seal - Mechanical 1"	1	19	O'ring Difuser	1
	Spacer - Yoke Bolt (Not Shown)	4	NS	Strap - Cap (Triple)	1
9	Bolt & Seal Kit (Set/12)	4	NS	Anti Vibration Feet (Set/2)	1
	Bolt & Seal Kit (Set/12) B48Y Only	4	NS	Bracket Support	1



# 7. Exploded diagram- Internal parts BLAZEMASTER TWIN



Item	Description	Qty	Item	Description	Qty
1	Gasket - Discharge	1		Stub Shaft 1"	1
2	Flange - Discharge 1½" BSP	1	15	Seal - Mechanical ¾"	1
	Flange - Discharge 2" BSP	1		Seal - Mechanical 1"	1
3	Handle	1		Spacer - Yoke Bolt (Not Shown)	4
	Nut - Bush 3/8" (Handle) Not shown	2	16	Bolt & Seal Kit (Set/12)	4
4	Cap & Washer 2" BSP	As Required	17	Yoke ¾" Blazemaster	1
	Cap & Washer 1½"BSP	As Required		Yoke 1" Blazemaster	1
	Cap & Washer 1"BSP	2	18	Nuts Casing (Set/12)	6
5	Suction Cover	1	19	Screw (Set/8) M8	8
6	Wear Ring	2	20	Flange - Suction 1½" BSP	1
	Screw - Impeller	1		Flange - Suction 2" BSP	1
8	Washer Impeller M10 x 30	1	21	Gasket - Clacker Assy	1
	Washer Impeller M10 x 40(Not Shown)	1	22	Bolts - Casing	6 (4 if handle)
9	Impeller - 5/8" Shaft	2		Bolts - Casing	2
	Impeller - 1" Shaft	2	23	Plug ¼" Drain (Including Oring)	1
10	Diffuser - Interstage	1	24	Casing	1
11	O'ring - Diffuser Interstage	1	25	O'ring Suction Cover	1
12	Diffuser - 2nd Stage	1	26	Washer (Spring) - Impeller	1
13	Spacer Sleeve 5/8" & ¾" Shaft	1	27	O'ring - Casing	1
	Spacer Sleeve 1" Shaft	1	NS	Strap - Cap (Triple)	1
14	Stub Shaft 5/8"	1	NS	Anti Vibration Feet (Set/2)	1
NS	Bracket Support	1			

# Notes.

A series of horizontal dotted lines for writing notes.

# Notes.

A series of horizontal dotted lines for writing notes.

IMPORTANT

Please attach your sales invoice/docket here as proof of purchase should warranty service be required.

Please do not return Warranty - Retain for your records.

Purchased From .....

Purchase Date..... Serial No..... Model No.....



1-21 Monash Drive,  
Dandenong South, Vic 3175

**Australia**

National Customer Service: Phone: 1300 137 344  
Fax: 1800 006 688  
National Dealer Locator: Phone: 1800 664 266  
Email: [au.sales@pentair.com](mailto:au.sales@pentair.com)  
Web: [www.pentair.com.au](http://www.pentair.com.au)

**New Zealand**

National Customer Service: Phone: 0800 654 112  
Fax: 0800 806 642  
National Dealer Locator: Phone: 0800 664 269  
Email: [nz.sales@pentair.com](mailto:nz.sales@pentair.com)  
Web: [www.pentair.co.nz](http://www.pentair.co.nz)

**International Australia/New Zealand**

Phone: +61 3 9709 5800  
Fax: +61 3 9709 5888

© Information contained here-in remains the property of Pentair Pty Ltd. Any reproduction, display, publication, modification or distribution is strictly prohibited without the prior written permission of Pentair Pty Ltd.

Disclaimer: Pentair reserves the right to change product specifications and products details. All product images are for reference purposes only and may not represent actual and/or current product.