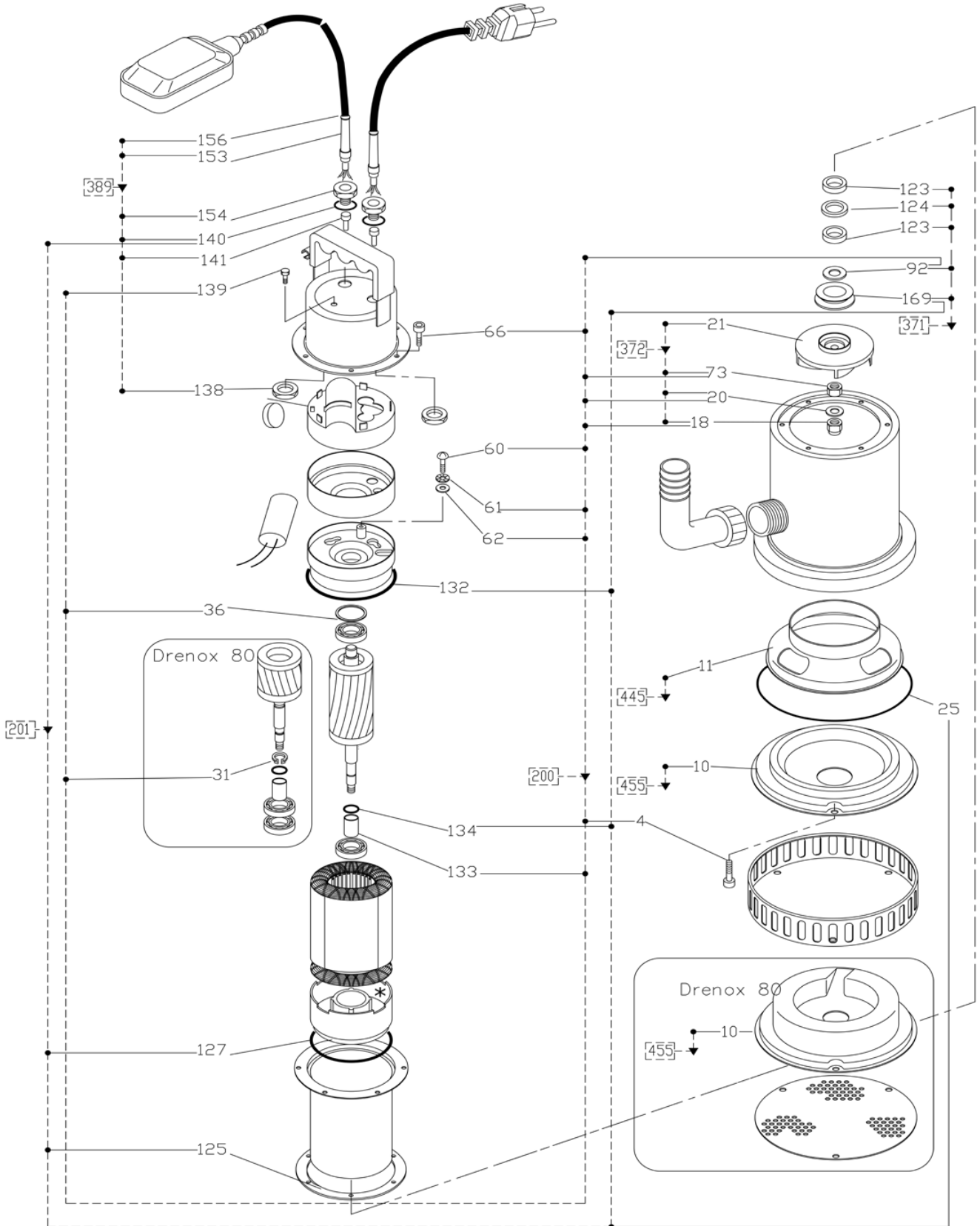


Drenox Models

SUBMERSIBLE



Drawings are indicative only, product appearance may change slightly.

PARTS LIST TABLE

Drenox Models

| Model | DRENOX 80/7 | DRENOX 250/10 |
|-------------|-------------|---------------|
| Part number | P1031020 | P1031400 |

| KIT REF. NO. | COMPONENT REFERENCE NO. | REF NO. | COMPONENT DESCRIPTION | DRENOX 80/7 | | DRENOX 250/10 | |
|--------------|-------------------------|---------|-------------------------------|-------------|-----|---------------|-----|
| 201 | GASKET KIT | 140 | O-RING (CORDING CLAMP) | ZBR36770 | | | 2PC |
| | | 132 | O-RING (MOTOR BODY) | | | | 1PC |
| | | 125 | GASKET (COVER) | | | | 1PC |
| | | 169 | SAND PROTECTION | | | | 1PC |
| | | 134 | O-RING (CERAMIC BUSHING) | | | | 1PC |
| | | 127 | O-RING (LOWER BEARING FLANGE) | | | | 1PC |
| | | 25 | O-RING (PUMP BODY) | | | | 1PC |
| 371 | MECHANICAL SEAL KIT | 123 | RING SEAL | ZBR36800 | | | 2PC |
| | | 169 | SAND PROTECTION | | | | 2PC |
| | | 92 | WASHER | | | | 2PC |
| | | 124 | SPACER (SEAL RING) | | | | 1PC |
| 372 | HYDRAULIC KIT | 21 | IMPELLER | ZBR36810 | 1PC | ZBR36830 | 1PC |
| | | 20 | WASHER (IMPELLER) | | | | 1PC |
| | | 73 | NUT | 1PC | 1PC | | |
| | | 18 | NUT (SELF LOCKING) | 1PC | 1PC | | |
| 389 | FLOAT SWITCH | 156 | FLOAT SWITCH | ZBR20450 | | | 1PC |
| | | 153 | GROMMET (CABLE 9MM DIA) | | | | 1PC |
| | | 154 | CORDING CLAMP | | | | 1PC |
| | | 140 | O-RING (CORDING CLAMP) | | | | 1PC |
| | | 141 | CONNECTOR 2.5SQMM | | | | 1PC |
| | | 138 | NUT (CORDING CLAMP LOCKING) | | | | 1PC |
| 445 | CONVEYOR KIT | 11 | DIFFUSER (DISCHARGE) | ZBR36900 | | | 1PC |
| 455 | KIT BASE | 10 | DIFFUSER (SUCTION) | ZBR36910 | 1PC | ZBR36920 | 1PC |

SUBMERSIBLE