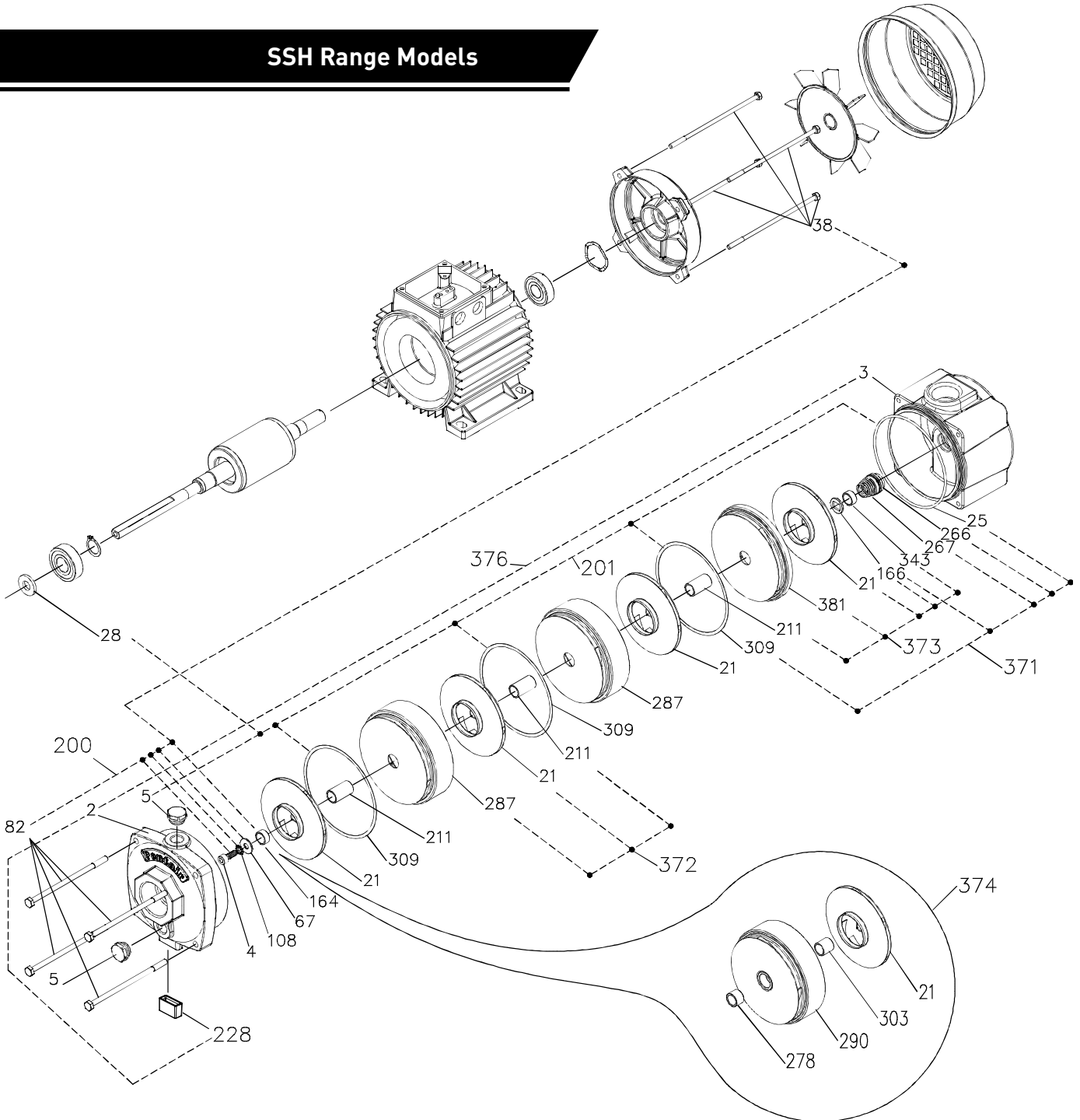


SSH Range Models

HOMEMASTER RANGE



PARTS LIST TABLE

SSH Range Models

		MODEL		SSH500	SSH750	SSH1100		
		PART NUMBER		SSH500	E9402104NG	E9402106NG		
KIT NO.	KIT REFERENCE	REF NO.	COMPONENT DESCRIPTION	SSH500	SSH750	SSH1100		
200	BOLTS & SCREW KITS	82	TIE RODS (PUMP BODY)	ZBR20410	4PC	ZBR20070	ZBR20080	4PC
		4	SCREW		1PC			1PC
		67	WASHER		1PC			1PC
		164	SPACER (UPPER)		1PC			1PC
		108	WASHER (TOOTHED)		1PC			1PC
		38	TIE RODS (MOTOR)		4PC			4PC
201	PLUG & GASKET KIT	28	SHIELD	ZBR20010	1PC	ZBR20010	ZBR20010	1PC
		25	O-RING (PUMP BODY)		1PC			1PC
		309	GASKET (CHAMBER)		5PC			5PC
		5	PLUG (DRAIN/FILL)		2PC			2PC
371	MECHANICAL SEAL KIT	25	O-RING (PUMP BODY)	ZBR20000	1PC	ZBR20000	ZBR20000	1PC
		266	SEAL (STATIONARY)		1PC			1PC
		267	SEAL (ROTATING)		1PC			1PC
		309	GASKET (CHAMBER)		5PC			5PC
		166	WASHER (SEAL COMPRESSION)		1PC			1PC
372	HYDRAULIC KIT	287	DIFFUSER (INTERMEDIATE CHAMBER)	ZBR20420	1PC	ZBR20020	ZBR20020	1PC
		21	IMPELLER		1PC			1PC
		211	SPACER (IMPELLER)		1PC			1PC
373	HYDRAULIC KIT (LAST STAGE)	381	DIFFUSER (FLAT CHAMBER)	ZBR20430	1PC	ZBR20030	ZBR20030	1PC
		21	IMPELLER		1PC			1PC
		211	SPACER (IMPELLER)		1PC			1PC
		166	WASHER (SEAL COMPRESSION)		1PC			1PC
		343	WASHER (FLAT)		1PC			N/A
374	HYDRAULIC KIT (WITH BEARING)	290	DIFFUSER (BEARING RING)	-	-	-	ZBR20040	1PC
		278	RING (BEARING)		-			1PC
		21	IMPELLER		-			1PC
		301	SPACER H		-			1PC
376	PUMP CASING	3	DISCHARGE CHAMBER	ZBR20210	1PC	ZBR20220	ZBR20230	1PC
		2	SUCTION CHAMBER		1PC			1PC
		228	GASKET (ANTI-VIBRATION)		N/A			N/A