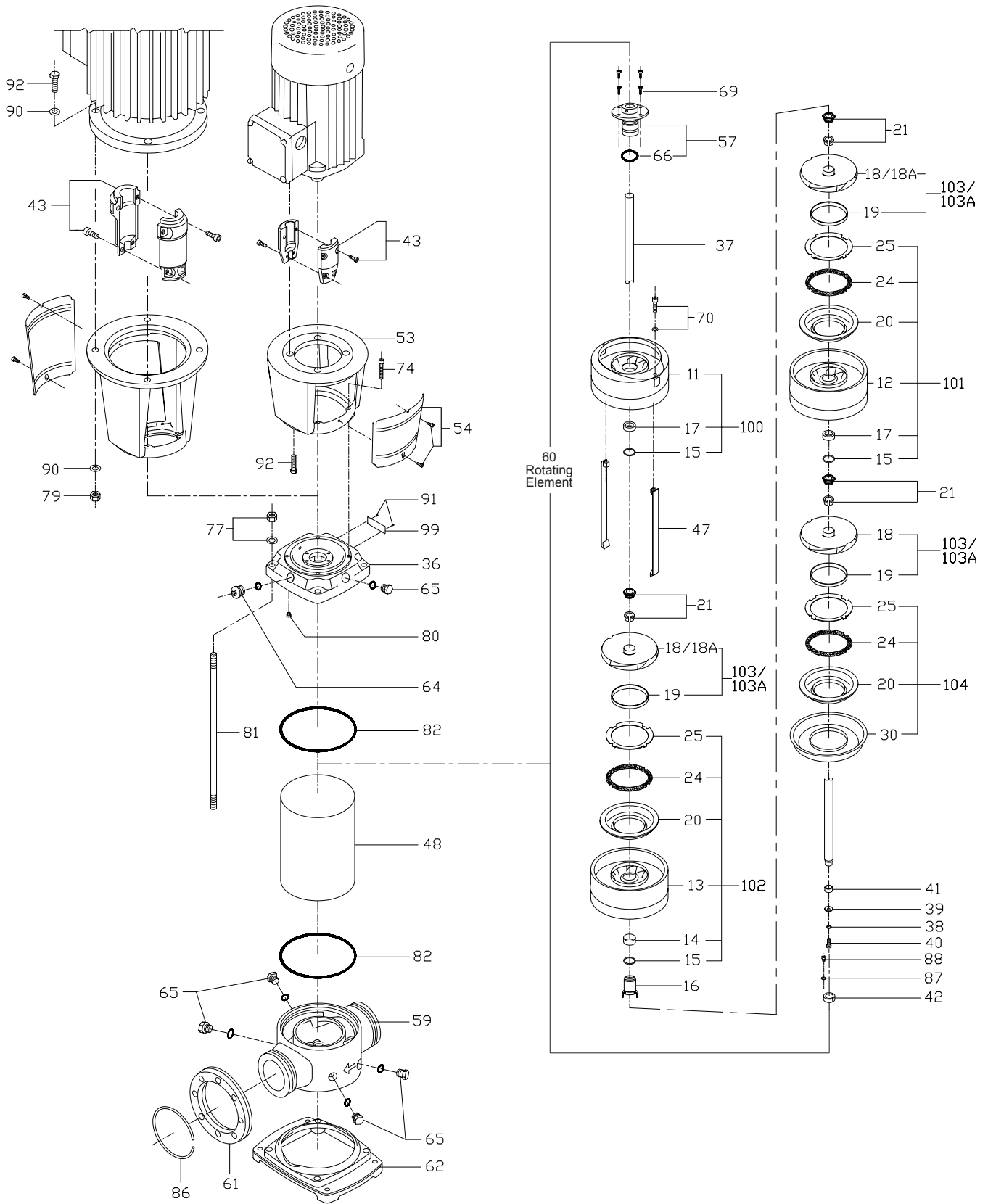




CENTRIFUGAL PUMPS

SBI(N)-64



**CENTRIFUGAL PUMPS****SBI(N)-64**

| ILLUS. NO. | NO. PER UNIT | SBI PART NO. | SBN PART NO. | DESCRIPTION |
|------------|--------------|--------------------------------------|--------------|------------------------------------|
| 11 | 1 | SBI6441100 | SBN6461100 | Upper Diffuser |
| 12 | as reqd. | SBI6441200 | SBN6461200 | Diffuser |
| 13 | as reqd. | SBI6441300 | SBN6461300 | Diffuser with Bearing |
| 14 | as reqd. | SBI3241400 | SBN3261400 | Middle bearing |
| 15 | as reqd. | SBI3261500 | | Bearing fixed ring |
| 16 | 1 | SBI6461600 | | Bearing Sleeve |
| 17 | as reqd. | SBI3241700 | | Bearing |
| 18 | as reqd. | SBI6441800 | SBN6461800 | Impeller |
| 18A | as reqd. | SBI64418000A | SBN64618000A | Impeller |
| 19 | 1 | SBI6441900 | SBN6461900 | bush |
| 20 | 1 | SBI6442000 | SBN6462000 | Neck ring base |
| 21 | as reqd. | SBI3242100 | SBN3262100 | Split Cone & Split Cone Nut |
| 24 | as reqd. | SBI6492400 | | Neck ring |
| 25 | as reqd. | SBI6442500 | SBN6462500 | Neck ring retainer |
| 30 | 1 | SBI6443000 | SBN6463000 | Strap Retainer |
| 36 | 1 | SBI4543600 | SBN4563600 | Pump Top Cap |
| 37 | 1 | SEE PUMP SHAFT SELECTION CHART | | Pump shaft |
| 38 | 1 | SBI3263800 | | Spring Washer |
| 39 | 1 | SBI3293900 | SBN3263900 | Clamp Washer |
| 40 | 1 | SBI3294000 | SBN3264000 | Hexagon Socket Head Screw |
| 41 | 1 | SBI3294100 | | Bearing Internal Sleeve |
| 42 | 1 | SBI3294200 | | Bearing Outer Sleeve |
| 43 | 1 | SBI3294300B0 | | Coupling Assembly (Ψ28) 3-4kW |
| | 1 | SBI3294300C0 | | Coupling Assembly (Ψ38) 5.5-7.5kW |
| | 1 | SBI3294300D0 | | Coupling Assembly (Ψ42) 11-18.5kW |
| | 1 | SBI3294300E0 | | Coupling Assembly (Ψ48) 22kW |
| | 1 | SBI3294300F0 | | Coupling Assembly (Ψ55) 30-45kW |
| 47 | 2 | SEE STRAP SELECTION CHART | | Strap |
| 48 | 1 | SEE PUMP CASING SELECTION CHART | | Pump casing |
| 53 | 1 | SBI3295300B0 | | Motor stool (3-4kW) |
| | 1 | SBI3295300C0 | | Motor stool (5.5-7.5kW) |
| | 1 | SBI3295300D0 | | Motor stool (11-18.5kW) |
| | 1 | SBI3295300E0 | | Motor stool (30kW) |
| | 1 | SBI3295300F0 | | Motor stool (45kW) |
| 54 | 1 | SBI3245400A0 | | Coupling guard (1.5-7.5kW) |
| | 1 | SBI32445400B0 | | Coupling guard (11-30kW) |
| 57 | 1 | SBI3295700 | SBN3265700 | Mechanical Shaft Seal |
| 59 | 1 | SBI6445900 | SBN6465900 | Pump Base |
| 60 | 1 | SEE ROTATING ELEMENT SELECTION CHART | | Rotating Element |
| 61 | 2 | SBI6496100 | | Suction/Discharge Flange |
| 62 | 1 | SBI4566200 | | Base plate |
| 64 | 1 | SBI0196400 | SBN0166400 | Air vent screw & O-ring |
| 65 | 5 | SBI0196500 | SBN0166500 | Plug & O-ring |
| 66 | 1 | SBI3296600E | SBN3266600V | O-ring |
| 69 | 4 | SBI3296900 | | Hexagon socket Head Screw |
| 70 | 2 | SBI3297000 | SBN3267000 | Hexagon Socket Head Screw & Washer |



CENTRIFUGAL PUMPS

SBI(N)-64

| ILLUS. NO. | NO. PER UNIT | SBI PART NO. | SBN PART NO. | DESCRIPTION |
|------------|--------------|------------------------------|--------------|----------------------------------|
| 74 | 4 | | SBI3297400 | Screw |
| 77 | 4 | | | Nut & Washer |
| 79 | 4 | | | Nut JSBM16 - 11kW and up |
| 80 | 4 | SBI3298000 | SBN3298000 | Locating Buffer |
| 81 | 4 | SEE STAYBOLT SELECTION CHART | | Staybolt |
| 82 | 2 | SBI4598200 | SBN4568200 | Casing "O" Ring |
| 86 | 2 | | SBI6498600 | Retaining ring |
| 87 | 4 | | SBI3268700 | Washer |
| 88 | 4 | | SBI3268800 | Hexagon Socket Head Screw |
| 90 | 4 | | | Washer M16 - 11kW and up |
| 92 | 4 | | | Screw M8 - 1.5-4kW |
| | 4 | | | Screw M12 - 5.5-7.5kW |
| | 4 | | | Screw 16x55 - 11kW and up |
| 100 | 1 | SBI64-K0 | SBN64-K0 | Upper Diffuser Kit |
| 101 | as reqd. | SBI64-K1 | SBN64-K1 | Middle Diffuser Kit |
| 102 | as reqd. | SBI64-K2 | SBN64-K2 | Middle Diffuser with Bearing Kit |
| 103 | as reqd. | SBI64-K3 | SBN64-K3 | Impeller Kit |
| 103A | as reqd. | SBI64-K3A | SBN64-K3A | Impeller Kit A |
| 104 | 1 | SBI64-K4 | SBN64-K4 | Neck Ring Base Kit |

SHAFT SELECTION CHART

| MODEL | SBI PART NO. | SBN PART NO. |
|-----------|----------------|----------------|
| SBI64-1-1 | SBI649370001-1 | SBN646370001-1 |
| SBI64-1 | SBI649370001 | SBN646370001 |
| SBI64-2-2 | SBI649370002-2 | SBN646370002-2 |
| SBI64-2-1 | SBI649370002-1 | SBN646370002-1 |
| SBI64-2 | SBI649370002 | SBN646370002 |
| SBI64-3-2 | SBI649370003-2 | SBN646370003-2 |
| SBI64-3-1 | SBI649370003-1 | SBN646370003-1 |
| SBI64-3 | SBI649370003 | SBN646370003 |
| SBI64-4-2 | SBI649370002 | SBN646370002 |
| SBI64-4-1 | SBI649370004-1 | SBN646370004-1 |
| SBI64-4 | SBI649370004 | SBN646370004 |
| SBI64-5-2 | SBI649370005-2 | SBN646370005-2 |
| SBI64-5-1 | SBI649370005-1 | SBN646370005-1 |
| SBI64-5 | SBI649370005 | SBN646370005 |
| SBI64-6-2 | SBI649370006-2 | SBN646370006-2 |
| SBI64-6-1 | SBI649370006-1 | SBN646370006-1 |
| SBI64-6 | SBI649370006 | SBN646370006 |
| SBI64-7-2 | SBI649370007-2 | SBN646370007-2 |
| SBI64-7-1 | SBI649370007-1 | SBN646370007-1 |
| SBI64-7 | SBI649370007 | SBN646370007 |
| SBI64-8-2 | SBI649370008-2 | SBN646370008-2 |
| SBI64-8-1 | SBI649370008-1 | SBN646370008-1 |

STRAP SELECTION CHART

| MODEL | SBI PART NO. | SBN PART NO. |
|-----------|----------------|----------------|
| SBI64-1-1 | SBI649470001-1 | SBN646470001-1 |
| SBI64-1 | SBI649470001 | SBN646470001 |
| SBI64-2-2 | SBI649470002-2 | SBN646470002-2 |
| SBI64-2-1 | SBI649470002-1 | SBN646470002-1 |
| SBI64-2 | SBI649470002 | SBN646470002 |
| SBI64-3-2 | SBI649470003-2 | SBN646470003-2 |
| SBI64-3-1 | SBI649470003-1 | SBN646470003-1 |
| SBI64-3 | SBI649470003 | SBN646470003 |
| SBI64-4-2 | SBI649470002 | SBN646470002 |
| SBI64-4-1 | SBI649470004-1 | SBN646470004-1 |
| SBI64-4 | SBI649470004 | SBN646470004 |
| SBI64-5-2 | SBI649470005-2 | SBN646470005-2 |
| SBI64-5-1 | SBI649470005-1 | SBN646470005-1 |
| SBI64-5 | SBI649470005 | SBN646470005 |
| SBI64-6-2 | SBI649470006-2 | SBN646470006-2 |
| SBI64-6-1 | SBI649470006-1 | SBN646470006-1 |
| SBI64-6 | SBI649470006 | SBN646470006 |
| SBI64-7-2 | SBI649470007-2 | SBN646470007-2 |
| SBI64-7-1 | SBI649470007-1 | SBN646470007-1 |
| SBI64-7 | SBI649470007 | SBN646470007 |
| SBI64-8-2 | SBI649470008-2 | SBN646470008-2 |
| SBI64-8-1 | SBI649470008-1 | SBN646470008-1 |





CENTRIFUGAL PUMPS

SBI(N)-64

PUMP CASING SELECTION CHART

| MODEL | SBI PART NO. | SBN PART NO. |
|-----------|----------------|----------------|
| SBI64-1-1 | SBI649480001-1 | SBN646480001-1 |
| SBI64-1 | SBI649480001 | SBN646480001 |
| SBI64-2-2 | SBI649480002-2 | SBN646480002-2 |
| SBI64-2-1 | SBI649480002-1 | SBN646480002-1 |
| SBI64-2 | SBI649480002 | SBN646480002 |
| SBI64-3-2 | SBI649480003-2 | SBN646480003-2 |
| SBI64-3-1 | SBI649480003-1 | SBN646480003-1 |
| SBI64-3 | SBI649480003 | SBN646480003 |
| SBI64-4-2 | SBI649480002 | SBN646480002 |
| SBI64-4-1 | SBI649480004-1 | SBN646480004-1 |
| SBI64-4 | SBI649480004 | SBN646480004 |
| SBI64-5-2 | SBI649480005-2 | SBN646480005-2 |
| SBI64-5-1 | SBI649480005-1 | SBN646480005-1 |
| SBI64-5 | SBI649480005 | SBN646480005 |
| SBI64-6-2 | SBI649480006-2 | SBN646480006-2 |
| SBI64-6-1 | SBI649480006-1 | SBN646480006-1 |
| SBI64-6 | SBI649480006 | SBN646480006 |
| SBI64-7-2 | SBI649480007-2 | SBN646480007-2 |
| SBI64-7-1 | SBI649480007-1 | SBN646480007-1 |
| SBI64-7 | SBI649480007 | SBN646480007 |
| SBI64-8-2 | SBI649480008-2 | SBN646480008-2 |
| SBI64-8-1 | SBI649480008-1 | SBN646480008-1 |

ROTATING ELEMENT SELECTION CHART

| MODEL | SBI PART NO. | SBN PART NO. |
|-----------|--------------|--------------|
| SBI64-1-1 | SBI64-01-1R | SBN64-01-1R |
| SBI64-1 | SBI64-01R | SBN64-01R |
| SBI64-2-2 | SBI64-02-2R | SBN64-02-2R |
| SBI64-2-1 | SBI64-02-1R | SBN64-02-1R |
| SBI64-2 | SBI64-02R | SBN64-02R |
| SBI64-3-2 | SBI64-03-2R | SBN64-03-2R |
| SBI64-3-1 | SBI64-03-1R | SBN64-03-1R |
| SBI64-3 | SBI64-03R | SBN64-03R |
| SBI64-4-2 | SBI64-04-2R | SBN64-04-2R |
| SBI64-4-1 | SBI64-04-1R | SBN64-04-1R |
| SBI64-4 | SBI64-04R | SBN64-04R |
| SBI64-5-2 | SBI64-05-2R | SBN64-05-2R |
| SBI64-5-1 | SBI64-05-1R | SBN64-05-1R |
| SBI64-5 | SBI64-05R | SBN64-05R |
| SBI64-6-2 | SBI64-06-2R | SBN64-06-2R |
| SBI64-6-1 | SBI64-06-1R | SBN64-06-1R |
| SBI64-6 | SBI64-06R | SBN64-06R |
| SBI64-7-2 | SBI64-07-2R | SBN64-07-2R |
| SBI64-7-1 | SBI64-07-1R | SBN64-07-1R |
| SBI64-7 | SBI64-07R | SBN64-07R |
| SBI64-8-2 | SBI64-08-2R | SBN64-08-2R |
| SBI64-8-1 | SBI64-08-1R | SBN64-08-1R |

STAYBOLT SELECTION CHART

| MODEL | SBI PART NO. | SBN PART NO. |
|-----------|----------------|-----------------|
| SBI64-1-1 | SBI649810001-1 | SBN6444810001-1 |
| SBI64-1 | SBI649810001 | SBN6444810001 |
| SBI64-2-2 | SBI649810002-2 | SBN6444810002-2 |
| SBI64-2-1 | SBI649810002-1 | SBN6444810002-1 |
| SBI64-2 | SBI649810002 | SBN6444810002 |
| SBI64-3-2 | SBI649810003-2 | SBN6444810003-2 |
| SBI64-3-1 | SBI649810003-1 | SBN6444810003-1 |
| SBI64-3 | SBI649810003 | SBN6444810003 |
| SBI64-4-2 | SBI649810004-2 | SBN6444810004-2 |
| SBI64-4-1 | SBI649810004-1 | SBN6444810004-1 |
| SBI64-4 | SBI649810004 | SBN6444810004 |
| SBI64-5-2 | SBI649810005-2 | SBN6444810005-2 |
| SBI64-5-1 | SBI649810005-1 | SBN6444810005-1 |
| SBI64-5 | SBI649810005 | SBN6444810005 |
| SBI64-6-2 | SBI649810006-2 | SBN6444810006-2 |
| SBI64-6-1 | SBI649810006-1 | SBN6444810006-1 |
| SBI64-6 | SBI649810006 | SBN6444810006 |
| SBI64-7-2 | SBI649810007-2 | SBN6444810007-2 |
| SBI64-7-1 | SBI649810007-1 | SBN6444810007-1 |
| SBI64-7 | SBI649810007 | SBN6444810007 |
| SBI64-8-2 | SBI649810008-2 | SBN6444810008-2 |
| SBI64-8-1 | SBI649810008-1 | SBN6444810008-1 |