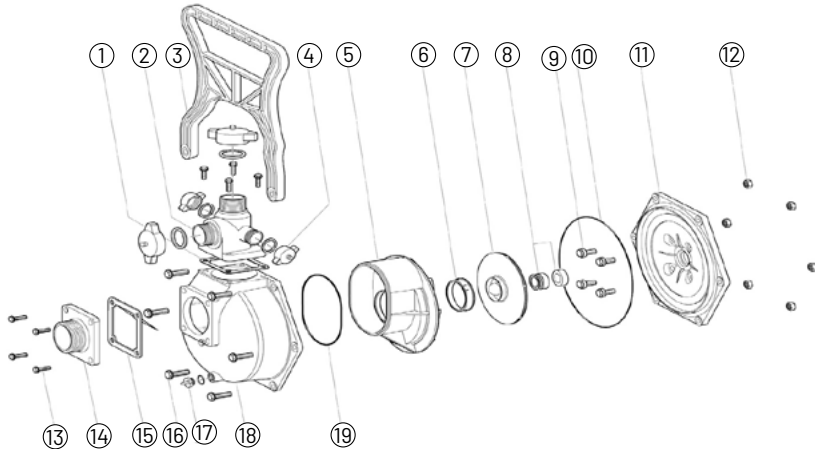


EXPLODED DIAGRAM - BLAZEMASTER INTERNAL PARTS



Item	Description	Qty.	Item	Description	Qty.
1	Gasket - Discharge	1	10	O'ring - Casing	1
2	Flange - Discharge 1½" BSP	1	11	Yoke ¾" Blazemaster	1
	Flange - Discharge 2" BSP	1		Yoke 1" Blazemaster	1
3	Handle	1	12	Nuts - Casing (Set/12)	6
4	Cap & Washer 2" BSP	As Required		Nut - Bush 3/8" (Handle)	2
	Cap & Washer 1.5" BSP	As Required	13	Screw (Set/8) M8	8
	Cap & Washer 1" BSP	2	14	Flange - Suction 1 1/2" BSP	1
5	Diffuser	1		Flange - Suction 2" BSP	1
6	Wear Ring	1	15	Gasket - Clacker Assy	1
7	Impeller - ¾" Shaft	1	16	Bolts Casing	6 (4 if handle)
	Impeller - 5/8" Shaft	1		Bolts Casing	2
	Impeller - 1" Shaft	1	17	Plug ¼" Drain (Including Oring)	1
8	Seal - Mechanical ¾"	1	18	Casing	1
	Seal - Mechanical II "	1	19	O'ring Difuser	1
	Spacer - Yoke Bolt (Not Shown)	4	NS	Strap - Cap (Triple)	1
9	Bolt & Seal Kit (Set/12)	4	NS	Anti Vibration Feet (Set/2)	1
	Bolt & Seal Kit (Set/12) B48Y Only	4	NS	Bracket Support	1