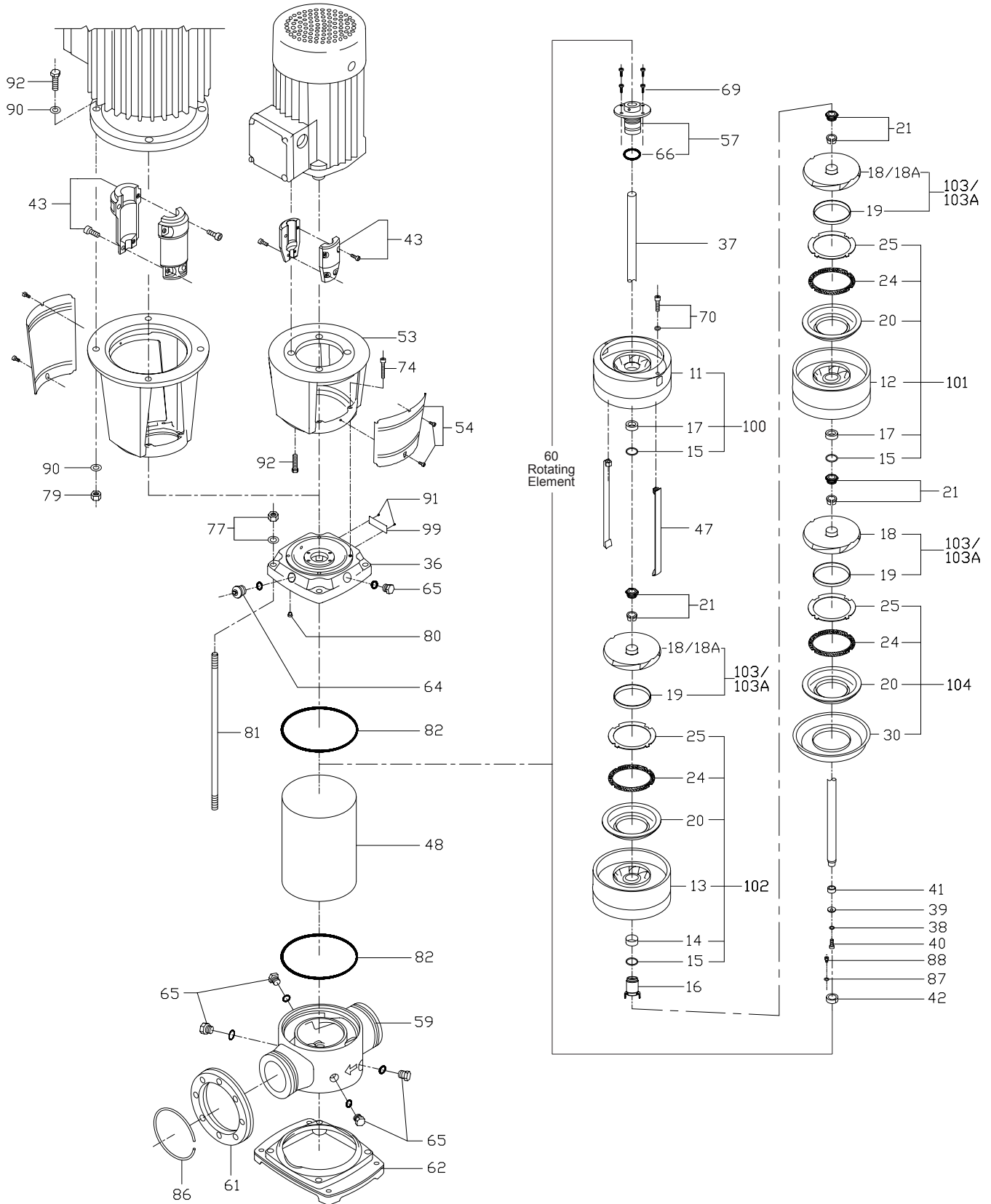




CENTRIFUGAL PUMPS

SBI(N)-90



**CENTRIFUGAL PUMPS****SBI(N)-90**

ILLUS. NO.	NO. PER UNIT	SBI PART NO.	SBN PART NO.	DESCRIPTION
11	1	SBI9041100	SBN9061100	Discharge Part
+15	as reqd.		SBI3261500	Bearing fixed ring
+17	as reqd.		SBI3241700	Bearing
12	as reqd.	SBI9041200	SBN9061200	Upper Diffuser
+20	1	SBI9042000	SBN9062000	Neck ring base
+24	as reqd.	SBI9092400	SBN9092400	Neck ring
+25	as reqd.	SBI9042500	SBN9062500	Neck ring retainer
13	as reqd.	SBI9041300	SBN9061300	Middle diffuser with bearing ring
+14	as reqd.	SBI3241400	SBN3261400	Middle bearing
16	1	SBI9061600	SBN9061600	Bearing sleeve
18	as reqd.	SBI9041800	SBN9061800	Impeller
+19	as reqd.	SBI9041900	SBN9061900	Bush
18A	as reqd.	SBI90418000A	SBN90618000A	Impeller
21	as reqd.	SBI3242100	SBN3262100	Split cone
22	as reqd.	SBI3242200	SBN3262200	Split cone nut
30	1	SBI9043000	SBN9063000	Strap retainer
36	1	SBI9043600	SBN9063600	Pump head
37	1	SEE SHAFT SELECTION CHART		Pump shaft
38	1		SBI3263800	Spring washer
39	1		SBI3293900	Clamp washer
40	1			Hexagon socket head screw (M8 x 16L)
41	1		SBI3294100	Bearing internal sleeve
42	1		SBI3294200	Bearing outer sleeve
43	1		SBI3294300C0	Coupling Assembly (ψ38) 7.5, 10 HP
	1		SBI3294300D0	Coupling Assembly (ψ42) 15, 20, 25 HP
	1		SBI3294300E0	Coupling Assembly (ψ48) 30 HP
	1		SBI3294300F0	Coupling Assembly (ψ55) 40-60 HP
+73	1			Hexagon socket head screw (7.5-60HP)
47	2	SEE STRAP SLECTION CHART		Strap
48	1	SEE PUMP CASING SELECTION CHART		Pump casing
53	1		SBI3295300C0	Motor stool (7.5- 10 HP)
	1		SBI3295300D0	Motor stool (15- 30 HP)
	1		SBI3295300E0	Motor stool (40-50 HP)
	1		SBI4595300	Motor stool (60 HP)
54	1		SBI3245400A0	Coupling guard (2 ~ 10HP)
	1		SBI32445400B0	Coupling guard (15 ~ 60HP)
57	1		SBI3265700__	Shaft seal
	1	SBI3295700 TUN/TUN	SBN3265700 TUN/TUN	Shaft seal-SUU
+66	1	SBI3296600-P44	SBN3266600-P44	O-ring
59	1	SBI9045900	SBN9065900	Pump (Flange)
60	1	SEE ROTATING ELEMENT SELECTION CHART		Rotating Element
61	2		SBI6496100	Flange (PN 16)
	2		SBI6496100A0	Flange( PN 25)
62	1	SBI9066200		Base plate (Flange)
64	1	SBI0196400	SBN0166400	Air vent screw
65	5	SBI0196500	SBN0166500	Plug
69	4			Hexagon socket head screw
70	2			Hexagon socket head screw
71	4		SBI3267100	Washer
74	4			Screw



**CENTRIFUGAL PUMPS**

**SBI(N)-90**

ILLUS. NO.	NO. PER UNIT	SBI PART NO.	SBN PART NO.	DESCRIPTION
75				Screw
76				O-ring
77	4			Nut
78				Washer
79	4			Nut
80	4	SBI3298000	SBN3268000	Disc spring
81	4	SEE STAYBOLT SELECTION CHART		Staybolt
82	2	SBI9098200	SBN9068200	O-ring
86	2	SBI6498600		Retaining ring
87	4	SBI3268700		Washer
88	4			Hexagon socket head screw (M6 x 10L)
90	4			Washer (M16CR)
91	4			Nail
92	4			Screw (M12 x 35L)
	4			Screw (M16 x 55L)
99	1	SBI0199900	SBN0199900	Nameplate
100	1	SBI90-K0	SBN90-K0	Upper Diffuser Kit
101	as reqd.	SBI90-K1	SBN90-K1	Middle Diffuser Kit
102	as reqd.	SBI90-K2	SBN90-K2	Middle Diffuser with Bearing Kit
103	as reqd.	SBI90-K3	SBN90-K3	Impeller Kit
103A	as reqd.	SBI90-K3A	SBN90-K3A	Impeller Kit A
104	1	SBI90-K4	SBN90-K4	Neck Ring Base Kit

**SHAFT SELECTION CHART**

MODEL	SBI PART NO.	SBN PART NO.
SBI90-1-1	SBI909370001	SBN906370001
SBI90-1	SBI909370001	SBN906370001
SBI90-2-2	SBI909370002	SBN906370002
SBI90-2	SBI909370002	SBN906370002
SBI90-3-2	SBI909370003	SBN906370003
SBI90-3	SBI909370003	SBN906370003
SBI90-4-2	SBI909370004	SBN906370004
SBI90-4	SBI909370004	SBN906370004
SBI90-5-2	SBI909370005	SBN906370005
SBI90-5	SBI909370005	SBN906370005
SBI90-6-2	SBI909370006	SBN906370006
SBI90-6	SBI909370006	SBN906370006

**STRAP SELECTION CHART**

MODEL	SBI PART NO.	SBN PART NO.
SBI90-1-1	SBI909470001	SBI906470001
SBI90-1	SBI909470001	SBI906470001
SBI90-2-2	SBI909470002	SBI906470002
SBI90-2	SBI909470002	SBI906470002
SBI90-3-2	SBI909470003	SBI906470003
SBI90-3	SBI909470003	SBI906470003
SBI90-4-2	SBI909470004	SBI906470004
SBI90-4	SBI909470004	SBI906470004
SBI90-5-2	SBI909470005	SBI906470005
SBI90-5	SBI909470005	SBI906470005
SBI90-6-2	SBI909470006	SBI906470006
SBI90-6	SBI909470006	SBI906470006



**CENTRIFUGAL PUMPS**

**SBI(N)-90**

**PUMP CASING SELECTION CHART**

MODEL	SBI PART NO.	SBN PART NO.
SBI90-1-1	SBI909480001	SBN906480001
SBI90-1	SBI909480001	SBN906480001
SBI90-2-2	SBI909480002	SBN906480002
SBI90-2	SBI909480002	SBN906480002
SBI90-3-2	SBI909480003	SBN906480003
SBI90-3	SBI909480003	SBN906480003
SBI90-4-2	SBI909480004	SBN906480004
SBI90-4	SBI909480004	SBN906480004
SBI90-5-2	SBI909480005	SBN906480005
SBI90-5	SBI909480005	SBN906480005
SBI90-6-2	SBI909480006	SBN906480006
SBI90-6	SBI909480006	SBN906480006

**ROTATING ELEMENT SELECTION CHART**

MODEL	SBI PART NO.	SBN PART NO.
SBI90-1-1	SBI90-01-1R	SBN90-01-1R
SBI90-1	SBI90-01R	SBN90-01R
SBI90-2-2	SBI90-02-2R	SBN90-02-2R
SBI90-2	SBI90-02R	SBN90-02R
SBI90-3-2	SBI90-03-2R	SBN90-03-2R
SBI90-3	SBI90-03R	SBN90-03R
SBI90-4-2	SBI90-04-2R	SBN90-04-2R
SBI90-4	SBI90-04R	SBN90-04R
SBI90-5-2	SBI90-05-2R	SBN90-05-2R
SBI90-5	SBI90-05R	SBN90-05R
SBI90-6-2	SBI90-06-2R	SBN90-06-2R
SBI90-6	SBI90-06R	SBN90-06R

**STAYBOLT SELECTION CHART**

MODEL	SBI PART NO.	SBN PART NO.
SBI90-1-1	SBI904810001	SBI904810001
SBI90-1	SBI904810001	SBI904810001
SBI90-2-2	SBI904810002	SBI904810002
SBI90-2	SBI904810002	SBI904810002
SBI90-3-2	SBI904810003	SBI904810003
SBI90-3	SBI904810003	SBI904810003
SBI90-4-2	SBI904810004	SBI904810004
SBI90-4	SBI904810004	SBI904810004
SBI90-5-2	SBI904810005	SBI904810005
SBI90-5	SBI904810005	SBI904810005
SBI90-6-2	SBI904810006	SBI904810006
SBI90-6	SBI904810006	SBI904810006